

SKB360_369_501_EVB

使用说明 User Manual

文档信息 Document Information

标题 Title SKB360_369_501_EVB 使用说明 User Manual

文档类型 Document Type 使用说明 User Manual

文档编号 Document No. SL-18030023

版本日期 Version & Date V1.01 23-02 -2021

秘密等级 Security 公开 Open

修订历史 History

版本 Version	描述 Description	制作人 Maker	日期 Date
V1.01	初始发布 Initial Release.	Sherman	2021.01.23

Skylab 保留对本文件和本文件所载信息的所有权利。本文所述的产品、名称、标识和外观设计可全部或部分受知识产权管辖。未经 Skylab 明示许可，严禁复制、使用、修改或向第三方披露本文件或其任何部分。

此处包含的信息按“原样”提供，SKYLAB 对信息的使用不承担任何责任。对于信息的特定目的的准确性，正确性，可靠性和适用性，不作任何明示或暗示的保证，包括但不限于此。本文档可由 SKYLAB 随时修改。有关最新文档，请访问 www.skylab.com.cn。

版权(2021 年)，Skylab M&C 技术有限公司。

SKYLAB®是 Skylab M&C 技术有限公司在中国的注册商标。

SKYLAB reserves all rights to this document and the information contained herein. Products, names, logos and designs described herein may in whole or in part be subject to intellectual property rights. Reproduction, use, modification or disclosure to third parties of this document or any part thereof without the express permission of SKYLAB is strictly prohibited.

The information contained herein is provided “as is” and SKYLAB assumes no liability for the use of the information. No warranty, either express or implied, is given, including but not limited, with respect to the accuracy, correctness, reliability and fitness for a particular purpose of the information. This document may be revised by SKYLAB at any time. For most recent documents, visit www.skylab.com.cn.

Copyright © 2021, Skylab M&C Technology Co., Ltd.

SKYLAB® is a registered trademark of Skylab M&C Technology Co., Ltd in China

目 录

1 评估套件物料清单 Evaluation Kit Part List.....	4
2 评估板基本功能说明 EVB basic function introduction.....	4
3 EVB 驱动安装 EVB drive installation.....	6
4 联系我们 contact us.....	7

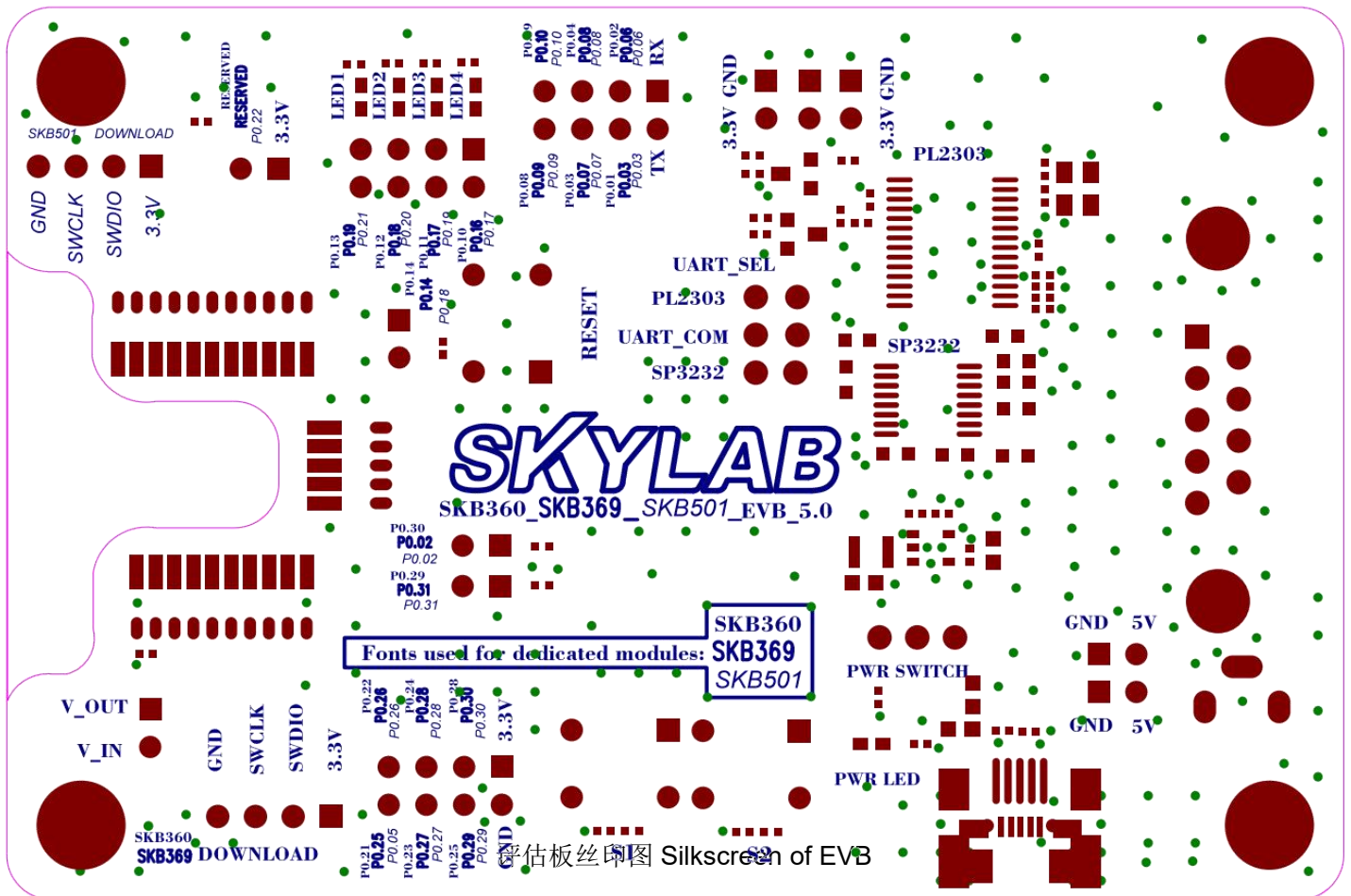
1 评估套件物料清单 Evaluation Kit Part List

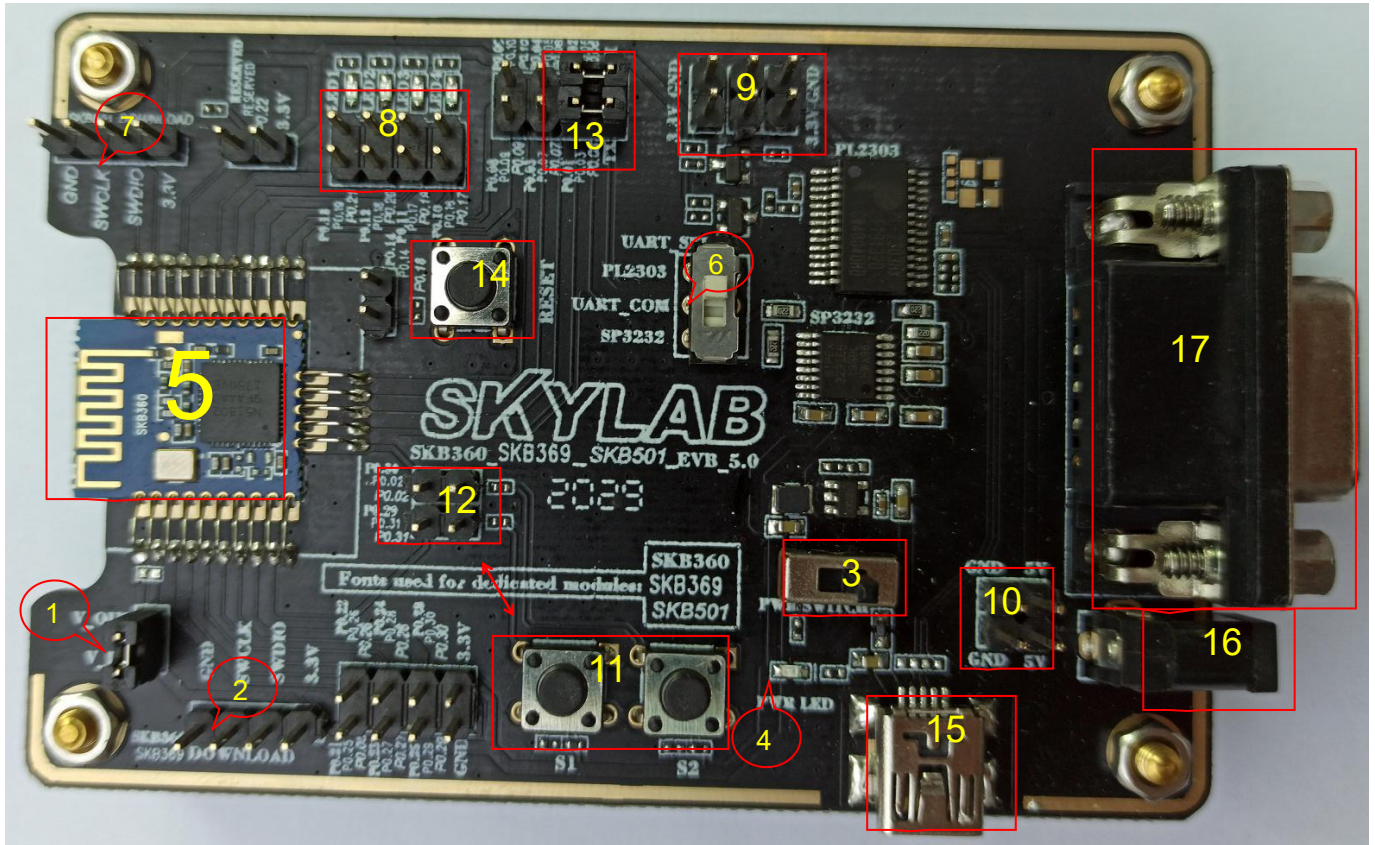
SKB360_SKB369_SKB501_EVB 包含以下物料清单 The EVB including the following part list:

物料名称	物料编号	数量	备注
SKB360_SKB369_SKB501_EVB_5.0	28270	1PCS	
Micro USB 数据线	16060	1PCS	供电 supply power
杜邦线	16074	4PCS	串口或其他连接

2 评估板基本功能说明 EVB basic function introduction

本 EVB 板同时兼容 SKB360,SKB369,SKB501 等模块，因为模块的 IO 口定义不同，EVB 板对应 pin 脚的 IO 也有差异，EVB 板上用不同字体来区别三个模块。如下丝印图和实物图：The EVB is compliant with all SKB360,SKB369,SKB501 modules. And due to different IO pin out of these modules, the EVB's IO indication on silkscreen layer is also different. They are shown in different font like the silkscreen figure and photo below:





评估板实物图 Real photo of EVB

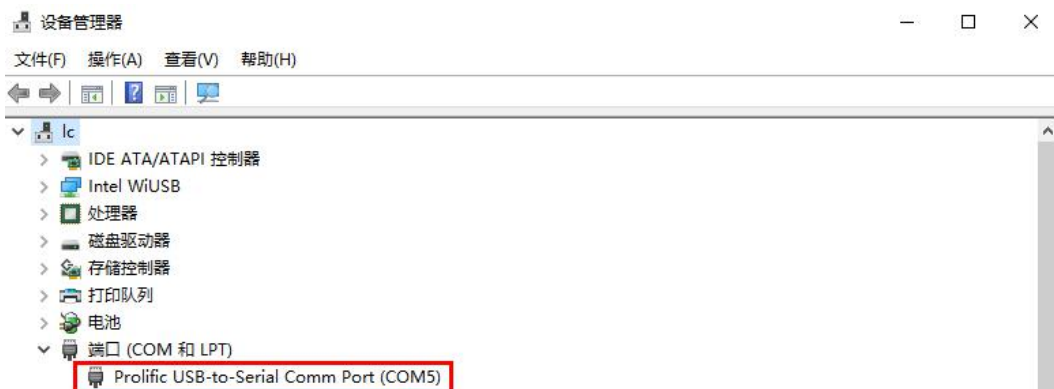
编号 No.	功能 Function	描述 Description
1	模块 3.3V 供电跳帽 Jumper for module 3.3V supply	一般使用短路帽连接，断开后可以串联电流表测模块电流 Shorten the 2pins with a jumper for general use. Remove the jumper and add a Ampemeter in series you can test the current.
2	烧录口 1 J-Link 1	供 SKB360_SKB361_SKB365_SKB369 模块烧录使用 Used for burning SKB360_SKB361_SKB365_SKB369 module
3	电源拨动开关 toggle switch of power	电源开关给整个 EVB 供电使用，右侧为开 The power switch supplies power to the entire EVB, Open on the right side
4	POWER 状态指示灯 indicator lamp of Power	3.3V 供电指示灯，电源拨动开关打开后常亮（3.3V 短路时熄灭） indicator lamp of 3.3V power , The indicator light is always on when after the power toggle switch is turned on(The indicator light out when 3.3V is short-circuited)
5	模块放置区 Module placement area	SKB360_SKB361_SKB365_SKB369_SKB501 均可卡在上面 Applicability:SKB360_SKB361_SKB365_SKB369_SKB501
6	串口选择拨动开关/跳帽 Serial port selection toggle switch/jumper	拨到上方为串口转 USB，拨到下方为串口转 DB9（RS232 电平） Switch to top for serial port to USB, switch to the bottom for serial port to DB9(RS232 electrical level)
7	烧录口 2 J-Link 2	供 SKB501 模块烧录使用 Used for burning SKB501 module
8	LED 灯组	供 I/O 口调试使用,低有效

	bank of lights	Used for I/O port debugging, low effective
9	3.3V 电源 Power:3.3V	方便给外部提供电源 3.3V power supply for external modules
10	5V 电源 Power:5V	方便给外部提供电源 5.0V power supply for external modules
11	按键 Button	自定义按键, 当 12 部分的跳帽左右连接时有效 Customized button when part 12 is connected with jumper from left to right
12	GPIO 和按键输出脚 GPIO and button output pin	跳帽左右连接时 11 中的按键才有效 When the pins is connected with jumper from left to right
13	UART 到模块接口 UART interface with module	UART 和模块引脚口接口, 默认跳帽左右连接 Conneting interface for UART and module pins. Default jump from left to right
14	复位按键 reset button	按键复位,低有效 Reset, low effective
15	USB 接口 Usb interface	USB 串口接口 USB to UART interface
16	DC 头 Power interface	外部 5V 电源接口,仅当评估板外挂大功率外设时使用 DC 5V power supply interface. Only used when the EVB connecting external equipmment which consumpt large power from the EVB
17	DB9 接口 DB9 interface	RS232 串口接口 UART RS232 interface

3 EVB 驱动安装 EVB drive installation

将 Micro USB 数据线 USB 端接到电脑上, 另一端接到 EVB 上, 打开设备管理器, 查看是否有对应的 com 口出现, 参照图二; 如果没有则需在电脑安装串口驱动, PL2303_Prolific_DriverInstaller_v1210.exe。

Connect the USB end of the Micro USB data cable to the computer and the other end to the EVB, and open the device manager to see if there is a corresponding com port, refer to Figure 2; If not, you need to install a serial port driver on your computer, pl2303 _ prolific _ driverinstaller _ v1210.exe.





PL2303_Prolific_
DriverInstaller_v1

4 联系我们 contact us

深圳市天工测控技术有限公司

Skylab M&C Technology Co., Ltd.

地址:深圳市龙华新区龙华办事处工业东路利金城科技工业园 9 栋 6 楼

Address: Floor 6, Building 9, Lijincheng Science and Technology Industrial Park, Gongye East Road, Longhua Office, Longhua New District, Shenzhen

电话 Tel: 86-755 8340 8210 (销售 Sales)

电话 Tel: 86-755 8340 8510 (技术 technical)

传真 Fax: 86-755-8340 8560

E-Mail: technicalsupport@skylab.com.cn

网址 Website: www.skylab.com.cn www.skylabmodule.com

如需完整的联系信息, 请访问我们的网站: www.skylab.com.cn 或者 www.skylabmodule.com。

For complete contact information, please visit our website: www.skylab.com.cn or www.skylabmodule.com.