

## Test Report

Report No. : TCT171109C013

Date : Nov.13, 2017

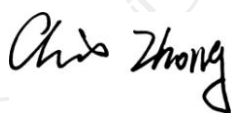
Page No.: 1 of 7

**Applicant:** Skylab M&C Technology Co.,Ltd  
**Address:** 6 Floor, Building 9, Lijincheng Scientific & Technical park, Gongye East Road, Longhua District, Shenzhen

**The following sample was submitted and identified by/on behalf of the client as:**

**Sample Name:** 2.4G WIFI Module  
**Model No.:** SKW71  
**Sample Received Date:** 2017.11.09  
**Testing Period:** 2017.11.09—2017.11.13  
**Test Requested:** According to customer's requirements, Split the sample and determine the Pb, Cd, Hg, Cr, Br content of the parts.  
**Test Method:**  
1. Sample prepared with reference to IEC 62321-2:2013 Determination of certain substances in electrotechnical products - Part 2: Disassembly, disjunction and mechanical sample preparation  
2. Sample Screening testing with reference to IEC 62321-3-1:2013 Determination of certain substances in electrotechnical products - Part 3-1: Screening - Lead, mercury, cadmium, total chromium and total bromine using X-ray fluorescence spectrometry.  
**Test Result(s):** Please refer to the following page(s).

Checked by



Chris Zhong

Signed for and on behalf of TCT



Kim Zhang

Technical Manager



## Test Report

Report No. : TCT171109C013

Date : Nov.13, 2017

Page No.: 2 of 7

### Test Result(s):

Part No.	Part Description	Restricted Substances	Result of EDXRF (mg/kg)	Data Submitted / Resubmitted Date
1	Black plastic	Pb Cd Hg Cr Br	BL BL BL BL 47729	Nov. 10, 2017
2	Copper color metal pin	Pb Cd Hg Cr Br	BL BL BL BL ---	Nov. 10, 2017
3	Copper color metal	Pb Cd Hg Cr Br	BL BL BL BL ---	Nov. 10, 2017
4	Copper color metal	Pb Cd Hg Cr Br	BL BL BL BL ---	Nov. 10, 2017
5	Cream plastic	Pb Cd Hg Cr Br	BL BL BL BL BL	Nov. 10, 2017
6	Silvery color electronic component	Pb Cd Hg Cr Br	BL BL BL BL BL	Nov. 10, 2017

## Test Report

Report No. : TCT171109C013

Date : Nov.13, 2017

Page No.: 3 of 7

Part No.	Part Description	Restricted Substances	Result of EDXRF (1)	Data Submitted / Resubmitted Date
7	Brown capacitor	Pb Cd Hg Cr Br	BL BL BL BL BL	Nov. 10, 2017
8	Black electronic component	Pb Cd Hg Cr Br	BL BL BL BL BL	Nov. 10, 2017
9	Black electronic component	Pb Cd Hg Cr Br	BL BL BL BL BL	Nov. 10, 2017
10	Black electronic component	Pb Cd Hg Cr Br	BL BL BL BL BL	Nov. 10, 2017
11	Solder	Pb Cd Hg Cr Br	BL BL BL BL ---	Nov. 10, 2017
12	Green PCB	Pb Cd Hg Cr Br	BL BL BL BL 3589	Nov. 10, 2017

# Test Report

Report No. : TCT171109C013

Date : Nov.13, 2017

Page No.: 4 of 7

**Remark:**

- (1) (a) It is the result on total Br while test item on restricted substances is PBBs/PBDEs. It is the result on total Cr while test item on restricted substances is Cr<sup>6+</sup>.  
 (b) Results are obtained by EDXRF for primary screening, and further chemical testing by ICP-OES (for Cd, Pb, Hg), UV-Vis (for Cr<sup>6+</sup>) and GC/MS (for PBBs, PBDEs) is recommended to be performed, if the concentration exceeds the below warning value according to IEC62321-3-1:2013 (unit: mg/kg)

Element	Polymer	Metal	Composite Materials
Cd	$BL \leq (70-3\sigma) < X < (130+3\sigma) \leq OL$	$BL \leq (70-3\sigma) < X < (130+3\sigma) \leq OL$	$LOD < X < (150+3\sigma) \leq OL$
Pb	$BL \leq (700-3\sigma) < X < (1300+3\sigma) \leq OL$	$BL \leq (700-3\sigma) < X < (1300+3\sigma) \leq OL$	$BL \leq (500-3\sigma) < X < (1500+3\sigma) \leq OL$
Hg	$BL \leq (700-3\sigma) < X < (1300+3\sigma) \leq OL$	$BL \leq (700-3\sigma) < X < (1300+3\sigma) \leq OL$	$BL \leq (500-3\sigma) < X < (1500+3\sigma) \leq OL$
Br	$BL \leq (300-3\sigma) < X$	--	$BL \leq (250-3\sigma) < X$
Cr	$BL \leq (700-3\sigma) < X$	$BL \leq (700-3\sigma) < X$	$BL \leq (500-3\sigma) < X$

- (c) BL = Below Limit, OL = Over Limit, IN = Inconclusive, LOD = Limit of Detection, -- = Not Regulated, NA = Not Applicable.  
 (d) The XRF screening test for RoHS elements – The reading may be different to the actual content in the sample be of non-uniformity composition.  
 (2) 1mg/kg = 1ppm = 0.0001%, N.D.= Not Detected (<MDL), --- = Not Conducted.  
 (3) The maximum permissible limit is quoted from the Directive (EU) 2015/863 - Amendment of EU RoHS Directive 2011/65/EU (RoHS 2.0) Annex II.

RoHS Restricted Substances	Maximum Concentration Value (by weight in homogenous materials)
Lead (Pb)	0.1%
Cadmium (Cd)	0.01%
Mercury (Hg)	0.1%
Hexavalent Chromium (Cr VI)	0.1%
Polybrominated biphenyls (PBBs)	0.1%
Polybrominated diphenylethers (PBDEs)	0.1%

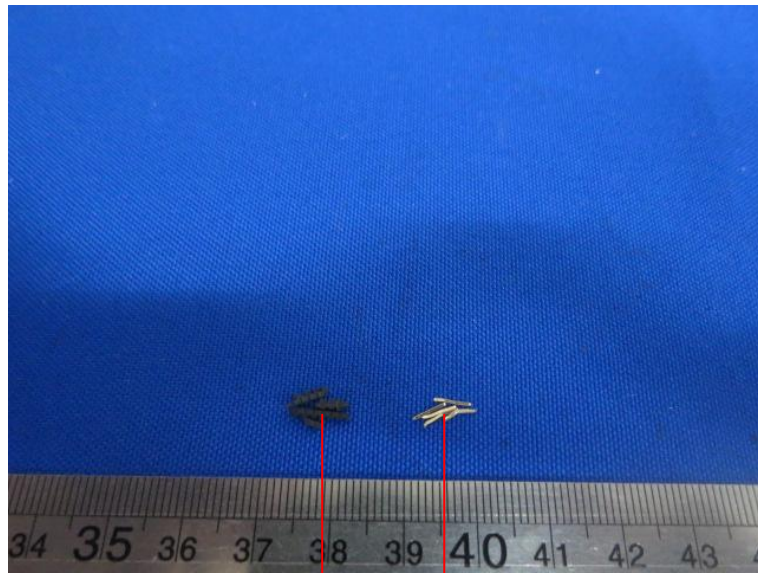
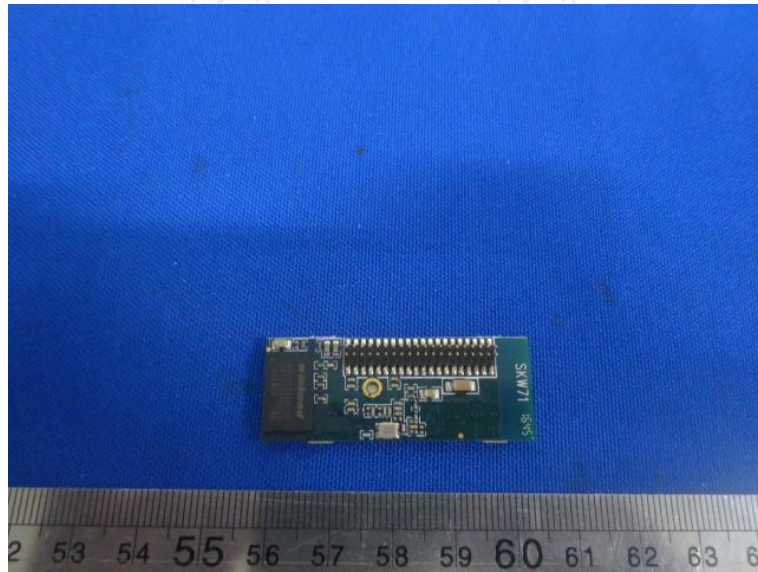
## Test Report

Report No. : TCT171109C013

Date : Nov.13, 2017

Page No.: 5 of 7

### Photo(s) of the sample(s)



1

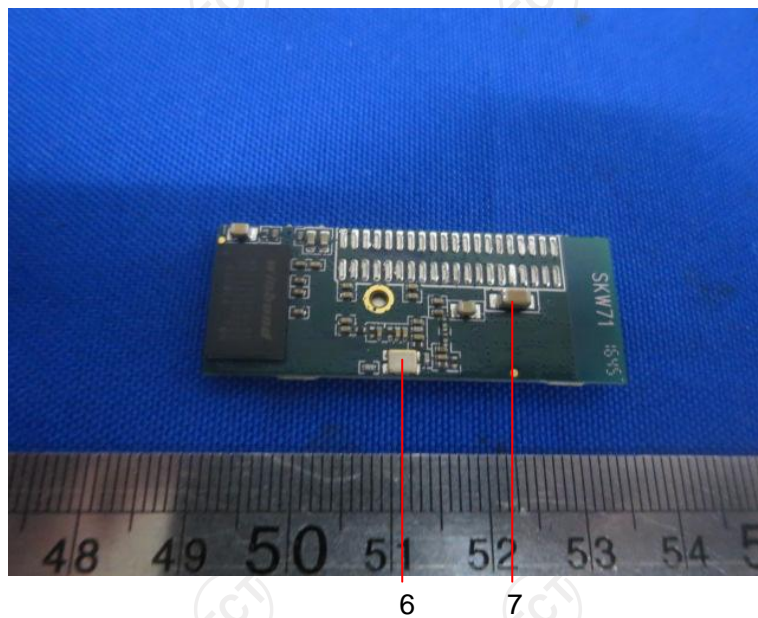
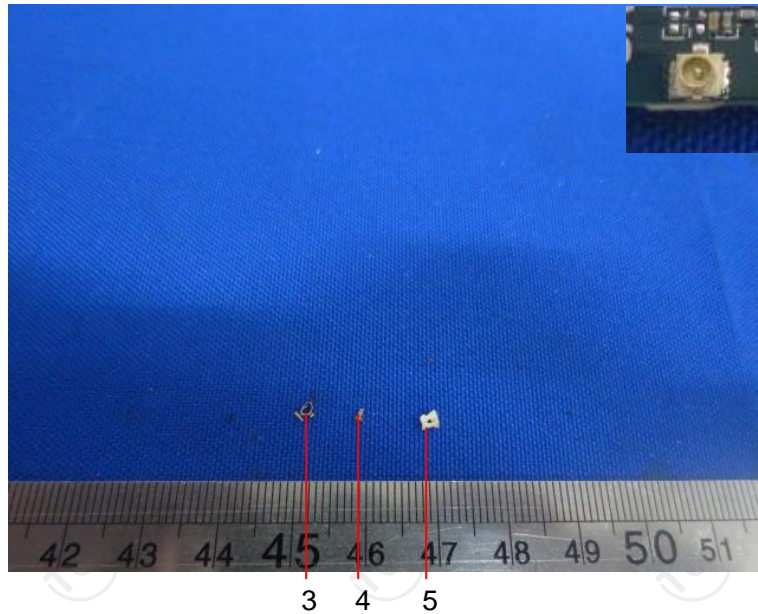
2

# Test Report

Report No. : TCT171109C013

Date : Nov.13, 2017

Page No.: 6 of 7

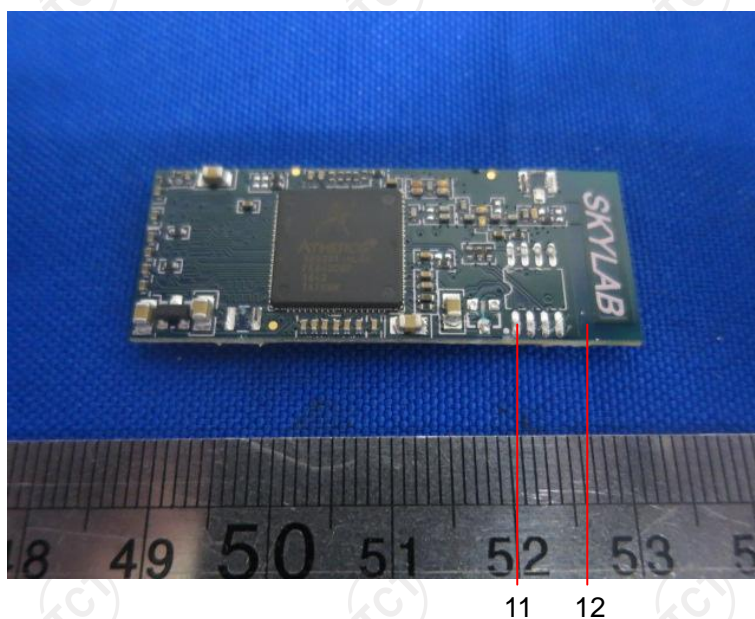
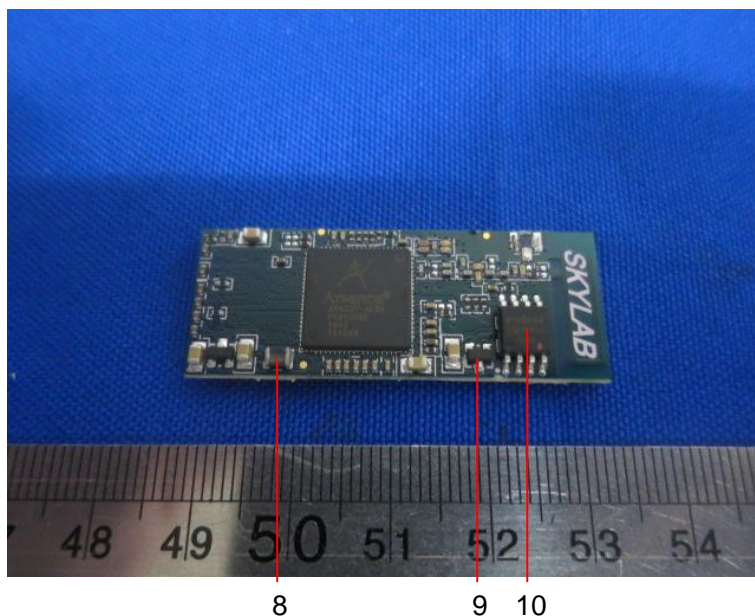


## Test Report

Report No. : TCT171109C013

Date : Nov.13, 2017

Page No.: 7 of 7



**\*\*\* End of Report \*\*\***

*Remark: This report is considered invalidated without the Special Seal for Inspection of the TCT. This report shall not be altered, increased or deleted. The results shown in this test report refer only to the sample(s) tested. Without written approval of TCT, this test report shall not be copied except in full and published as advertisement.*